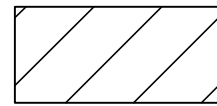


LEGEND



PROPOSED HOME SITE



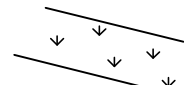
SUBDIVISION LOT LINES



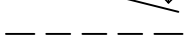
TREE LINE



DRIVEWAY IMPACT MARSH WETLAND



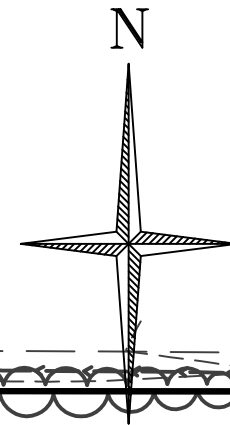
DELINEATED WETLANDS



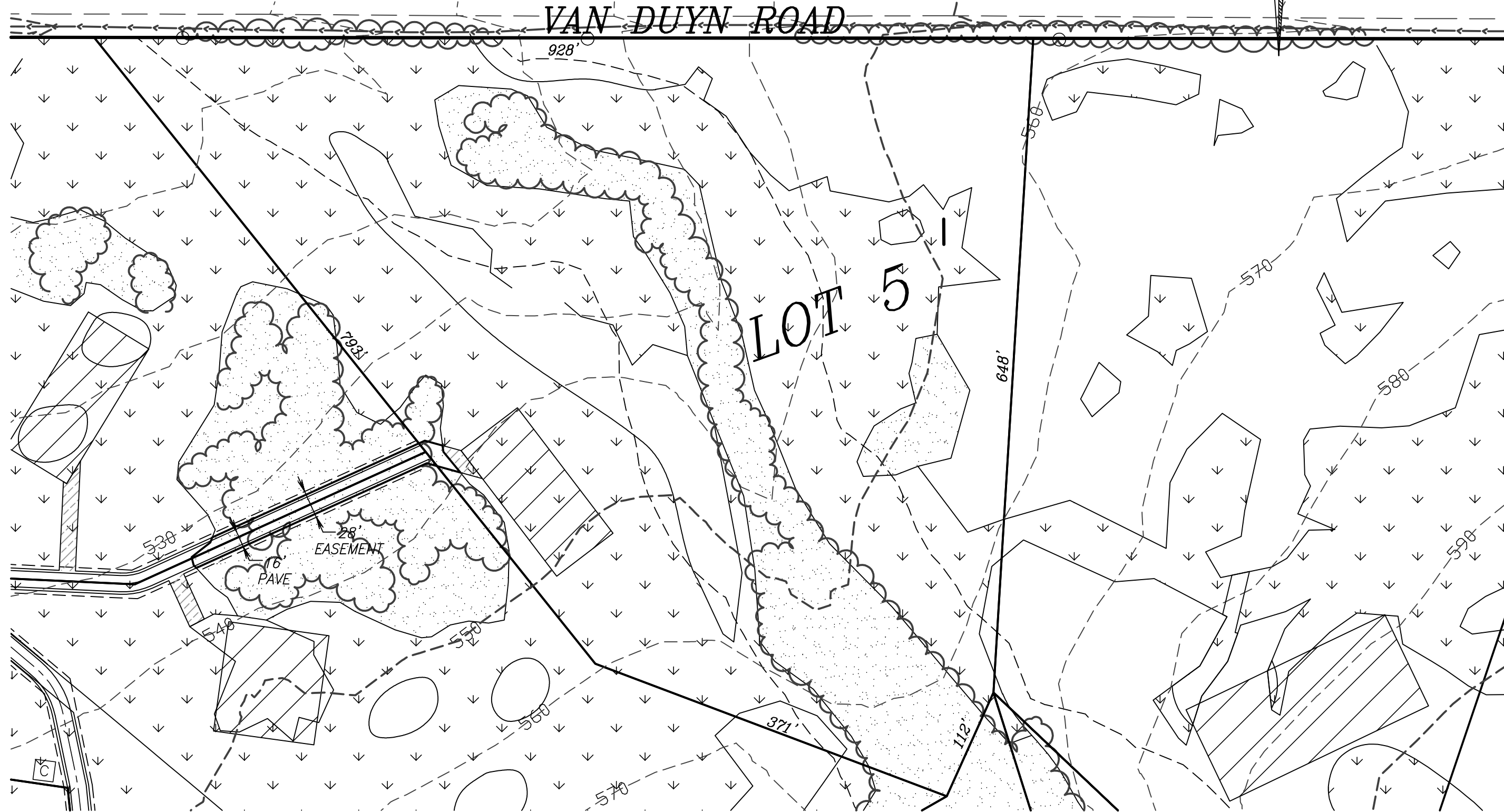
RIPARIAN SETBACK EASEMENT



SCALE IN FEET



VAN DUYN ROAD



GOEBEL ENGINEERING & SURVEYING
 1702 West 2nd
 Eugene, Oregon 97402 541/687-0542
 ENGINEERING - SURVEYING - PLANNING

DATE:	16 OCTOBER 2005
PROJECT No.:	06005-2005-C
SCALE:	1" = 100'
DATE:	N/A
DESIGNED BY:	GJF
CHECKED BY:	SJP
FILE:	...LOT_3_WETLAND.DWG

REVISIONS

OREGON

DRIVEWAY WETLAND IMPACT FOR LOT 5
 OWNER: JOE PRODDEN
 LAKE COUNTY

SHEET 5
 2005