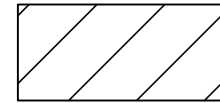





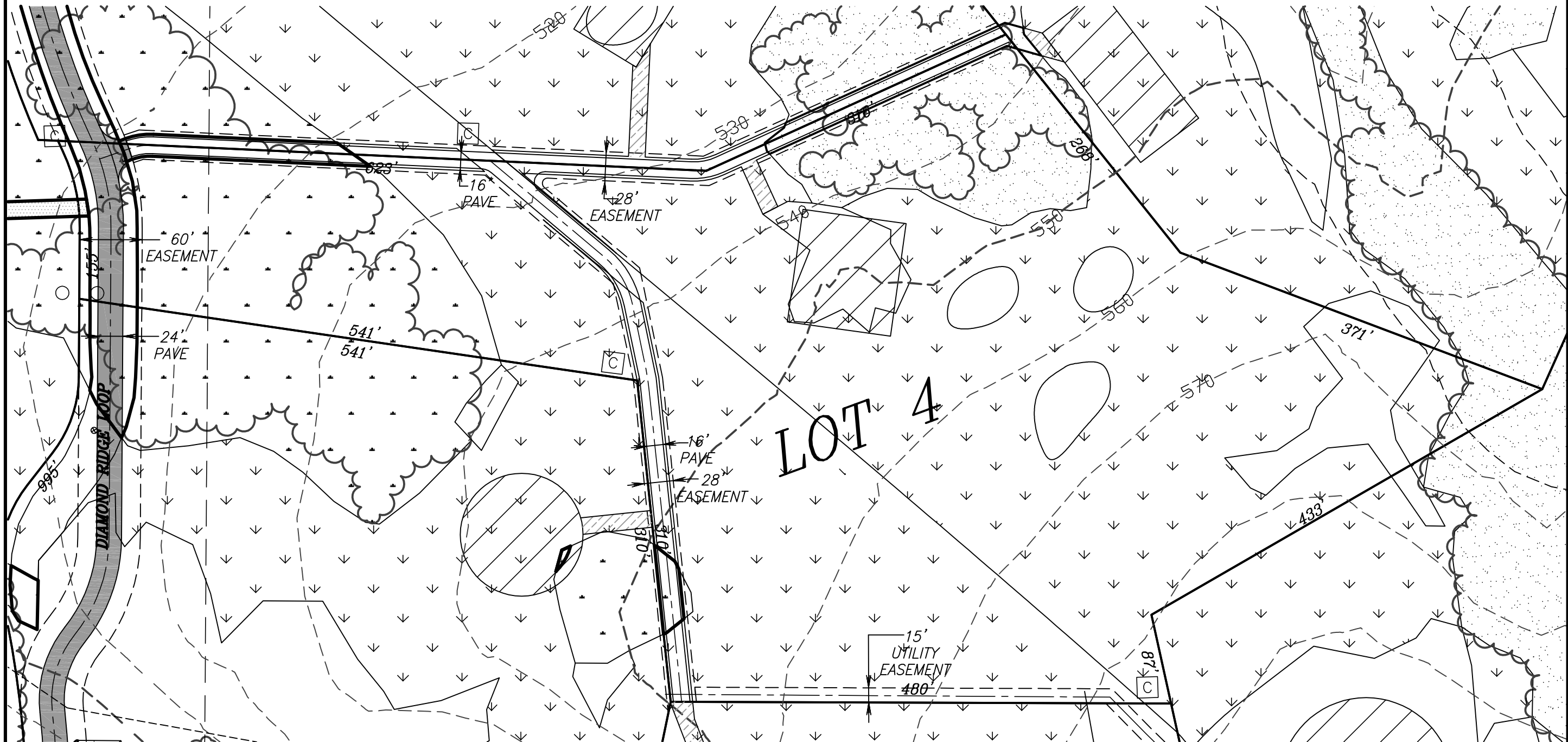
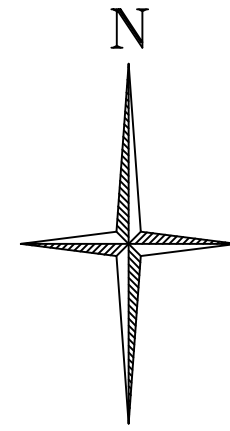


**LEGEND**

-  PROPOSED HOME SITE
-  DELINEATED WETLANDS
-  RIPARIAN SETBACK EASEMENT
-  SUBDIVISION LOT LINES
-  TREE LINE
-  DRIVEWAY IMPACT MARSH WETLAND



**GOEBEL ENGINEERING & SURVEYING**  
 1702 West 2nd  
 Eugene, Oregon 97402  
 541/687-0542

DATE:	16 OCTOBER 2005
PROJECT No:	06005-2005-C
SCALE:	1" = 100'
DATE:	N/A
DESIGNED BY:	GF
CHECKED BY:	S/C
FILE:	...DWE\LOT_3_WETLAND.DWG

REVISIONS

**DRIVEWAY WETLAND IMPACT FOR LOT 4**

OWNER: JOE PRODDEN  
 LAKE COUNTY

EUGENE OREGON

**SHEET 4 of 27**