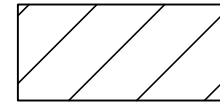
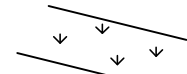




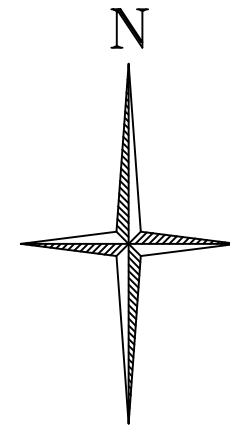
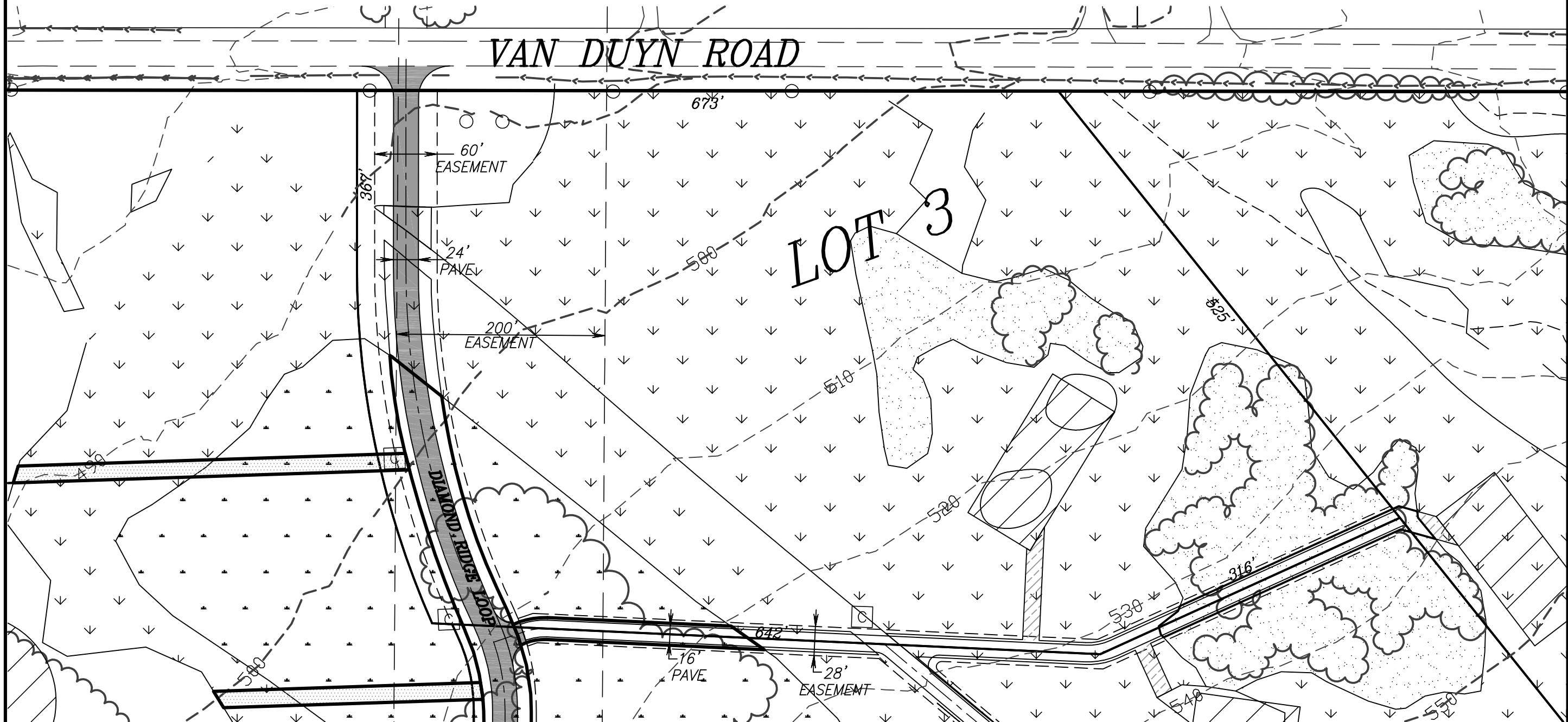


**LEGEND**

-  PROPOSED HOME SITE
-  DELINEATED WETLANDS
-  RIPARIAN SETBACK EASEMENT
-  SUBDIVISION LOT LINES
-  TREE LINE
-  DRIVEWAY IMPACT MARSH WETLAND



**VAN DUYN ROAD**



**GOEBEL ENGINEERING & SURVEYING**  
 1702 West 2nd  
 Eugene, Oregon 97402 541/687-0542  
 ENGINEERING - SURVEYING - PLANNING

DATE:	16 OCTOBER 2005
PROJECT No.:	06005-2005-C
SCALE:	1" = 100'
DATE:	N/A
DESIGNED BY:	GJF
CHECKED BY:	SJC
FILE:	_DWG\LOT_3_WETLAND.DWG

REVISIONS

**DRIVEWAY WETLAND IMPACT FOR LOT 3**

OWNER: JOE PRODDEN  
 LAKE COUNTY

OREGON  
 EUGENE

**SHEET 3**  
 2 of 7