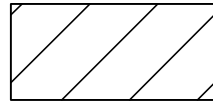
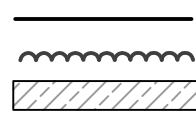


**LEGEND**



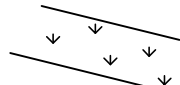
PROPOSED HOME SITE



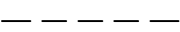
SUBDIVISION LOT LINES

TREE LINE

DRIVEWAY IMPACT MARSH WETLAND



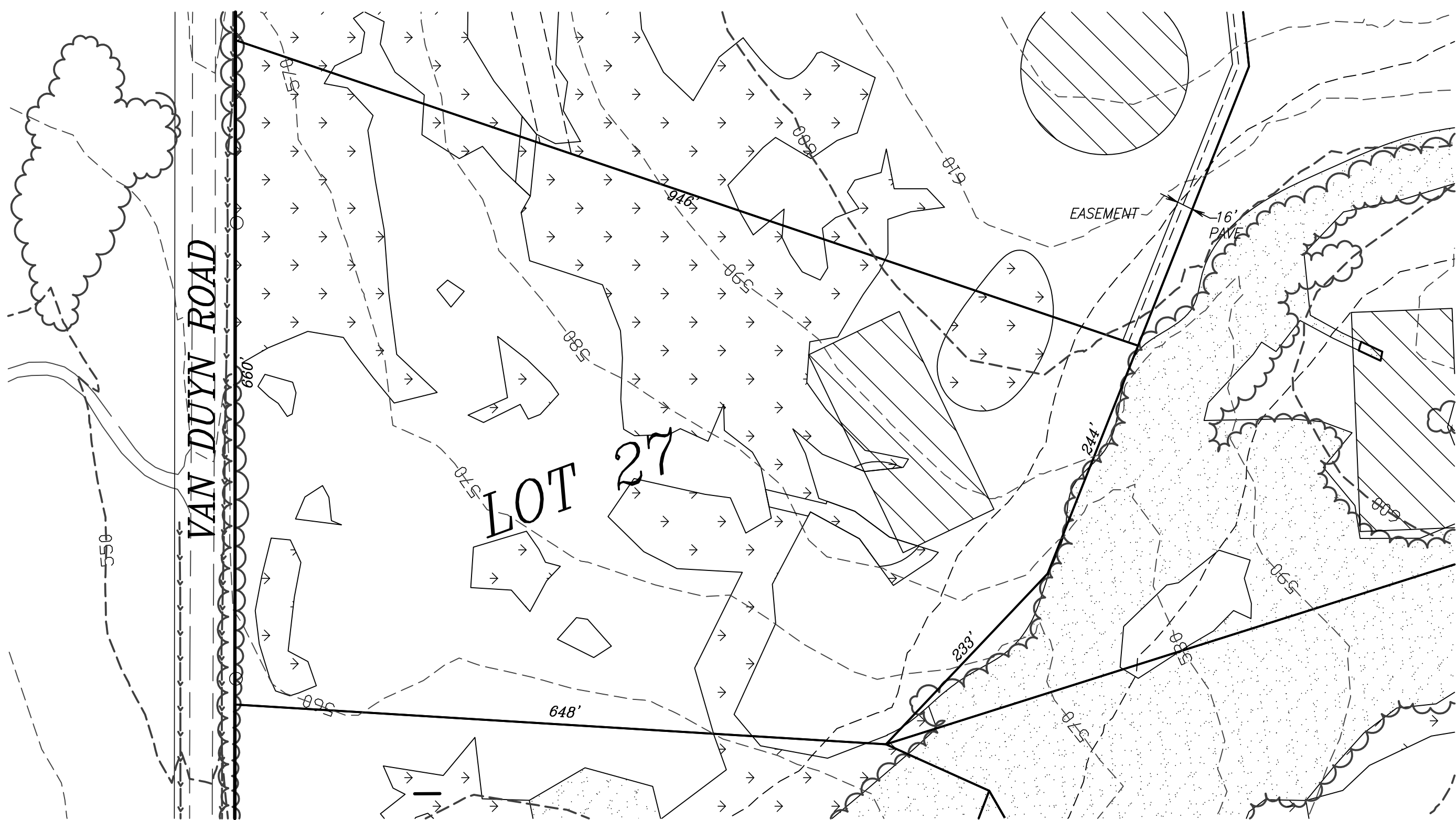
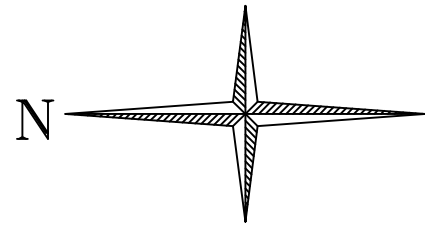
DELINEATED WETLANDS



RIPARIAN SETBACK EASEMENT



SCALE IN FEET



TAX MAP: 16-03-34 TAX LOT 200

**GOEBEL ENGINEERING & SURVEYING**  
 1762 West 2nd  
 Eugene, Oregon 97402 541/687-0542  
 ENGINEERING - SURVEYING - PLANNING

DATE:	17 OCTOBER 2005
PROJECT No:	06005-2005-C
SCALE:	1" = 100'
DATE:	N/A
DESIGNED BY:	CLF
DRAWN BY:	S/G
CHECKED BY:	S/G
FILE:	...DWS\LOT 27 WETLAND.DWG

REVISIONS

**DRIVEWAY WETLAND IMPACT FOR LOT 27**  
 OWNER: JOE PRODDEN  
 LAKE COUNTY  
 EUGENE OREGON

**SHEET 27 OF 27**