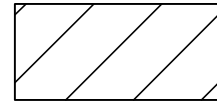


LEGEND



PROPOSED HOME SITE



SUBDIVISION LOT LINES



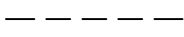
TREE LINE



DRIVEWAY IMPACT MARSH WETLAND



DELINEATED WETLANDS

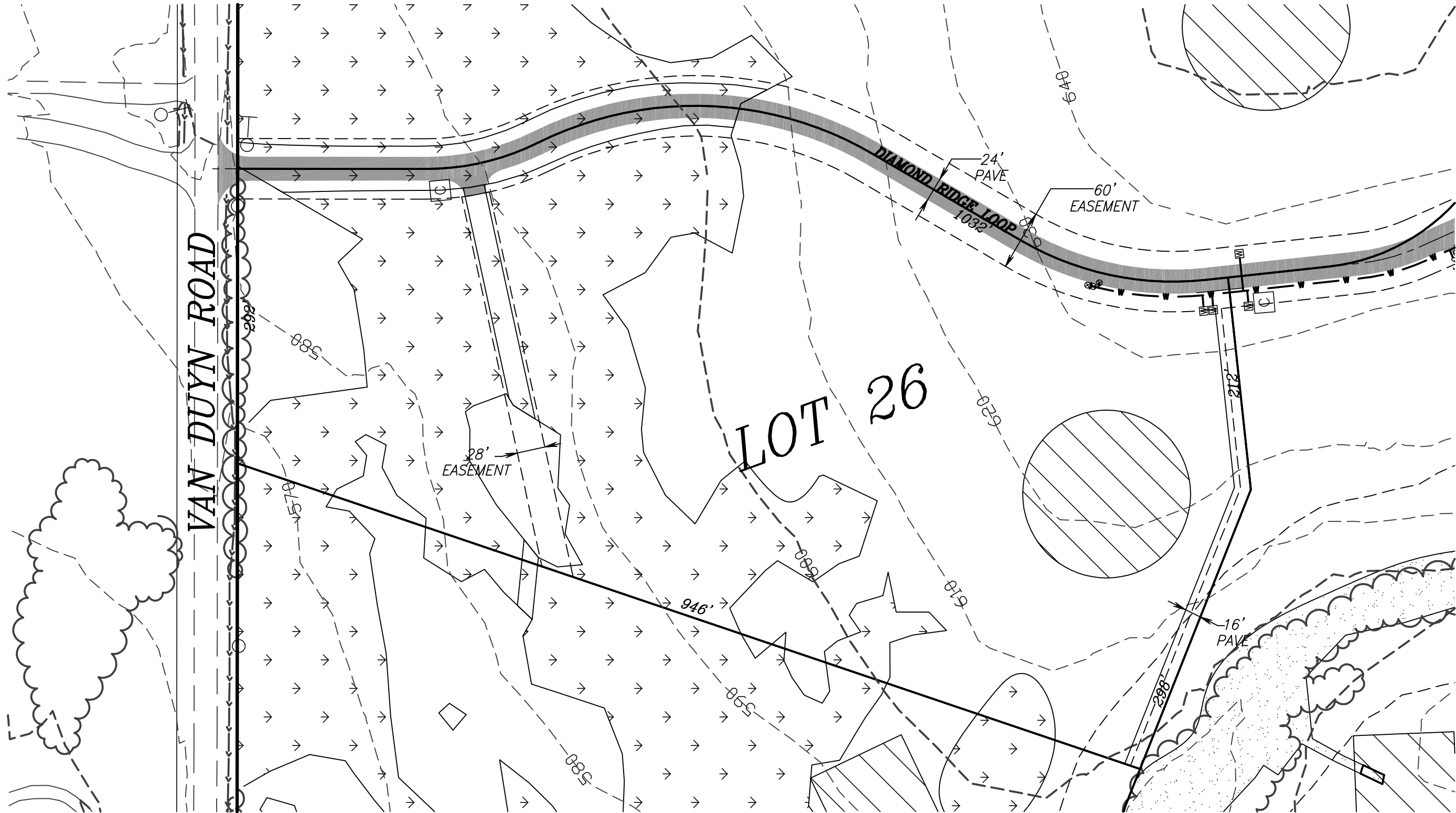
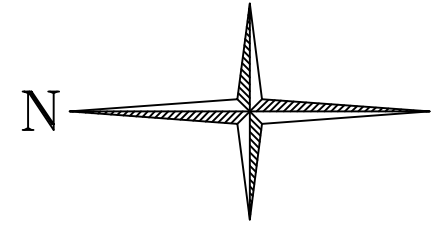


RIPARIAN SETBACK EASEMENT

100 0 100 200



SCALE IN FEET



TAX MAP: 16-03-34 TAX LOT 200

GOEBEL ENGINEERING & SURVEYING
 1762 West 2nd
 Eugene, Oregon 97402
 541/687-0542
 ENGINEERING - SURVEYING - PLANNING

DATE:	17 OCTOBER 2005
PROJECT No:	06005-2005-C
SCALE:	1" = 100'
DATE:	N/A
DESIGNED BY:	CLF
CHECKED BY:	SJC
FILE:	DWG\LOT 26 WETLAND.DWG

REVISIONS

DRIVEWAY WETLAND IMPACT FOR LOT 26
 OWNER: JOE PRODDEN
 LAKE COUNTY
 EUGENE OREGON

SHEET 26 of 27